



Credit: Toshihiro Oimatsu - side78 / www.flickr.com

## Forewords

### Yuko Nishida Tokyo Metropolitan Government



The Paris Agreement has come into effect and cities are now expected to play a greater role than ever. City officials in charge of climate change are now faced with the need to accelerate and scale up climate actions. In that regard, city networks like C40 Cities are crucial for identifying effective solutions in the urban context and expanding best practices. Tokyo Metropolitan Government (TMG) has participated in the Private Building Efficiency (PBE) network of C40 since 2013 by learning from other cities through workshops, webinars, sharing documents and conducting joint projects. Even though cities are defined by vastly unique local contexts, we face many common challenges. Inter-city communications through the C40 network thus provide many rich clues for solutions. In addition, the high motivation and enthusiasm we commonly share makes it an exciting task to tackle such challenges. Tokyo therefore sees great value in being a part of a network of such active collaboration, and we are honoured to be a lead city together with Sydney.

Tokyo hosted the PBE workshop in 2014, prompting publication of the first *Urban Efficiency* report. This was to share the important results of the workshop with other cities unable to attend, and also to other cities outside the C40 network. Documenting the results of innovative city-level action in the area of building energy efficiency and retrofitting is extremely important. It complements direct oral communication and also helps non-English speakers, including TMG staff, to more fully absorb lessons from other cities.

Thanks to the efforts of all those that cooperated in disseminating the first *Urban Efficiency* report in 2014 we have received much favourable feedback since its publication, including citations by various reports. This positive feedback has proved a great source of satisfaction and is a major factor behind our decision to release a second version.

In contrast to the ten case studies in the first report, which included many mandatory initiatives, *Urban Efficiency II* has surveyed mostly voluntary programmes (or those with a voluntary component). The effectiveness of these seven city programmes has been bolstered through a combination of creative



design efforts, stakeholder engagement and mixes of various policy instruments. For policy makers, I am confident that these detailed case studies will prove a treasure trove of practical tools and insights.

*Urban Efficiency II* is based on research conducted by TMG. In publishing our results, we would like to thank the efforts of CSR Design Green Investment Advisory (especially Tomoko Takagi) for much dedicated work. We also express much appreciation to Greg Trencher from Clark University as the lead author of the report, and for providing important insights from the perspective of the cases studies as a whole. This has deepened our understanding of city efforts in the area of building energy efficiency.

Finally, we extend special thanks to the contributors from each surveyed city sparing the time out of busy schedules to cooperate for interviews, provide additional information and correct the drafts.

It is my sincere hope that this report too will be an important reference not only for other C40 and PBE network members, but also for colleagues in other cities around the world.



**Frankie Downy**  
**C40 Cities Climate Leadership**  
**Group, London**



At the C40 Summit in Mexico City, C40's Deadline 2020 research revealed the scale of action needed to ensure our cities follow a pathway consistent with the Paris Agreement, and limit global temperature increase to 1.5 degrees. If this is to happen, the next four years are critical and require a huge increase in the rate of climate action in cities.

The member cities of the C40 represent 11% of the global population and a quarter of global GDP. They are the biggest cities in the world, and have a big responsibility to reduce emissions. But they are also the leading cities, innovative and ambitious in their plans and actions to tackle climate change.

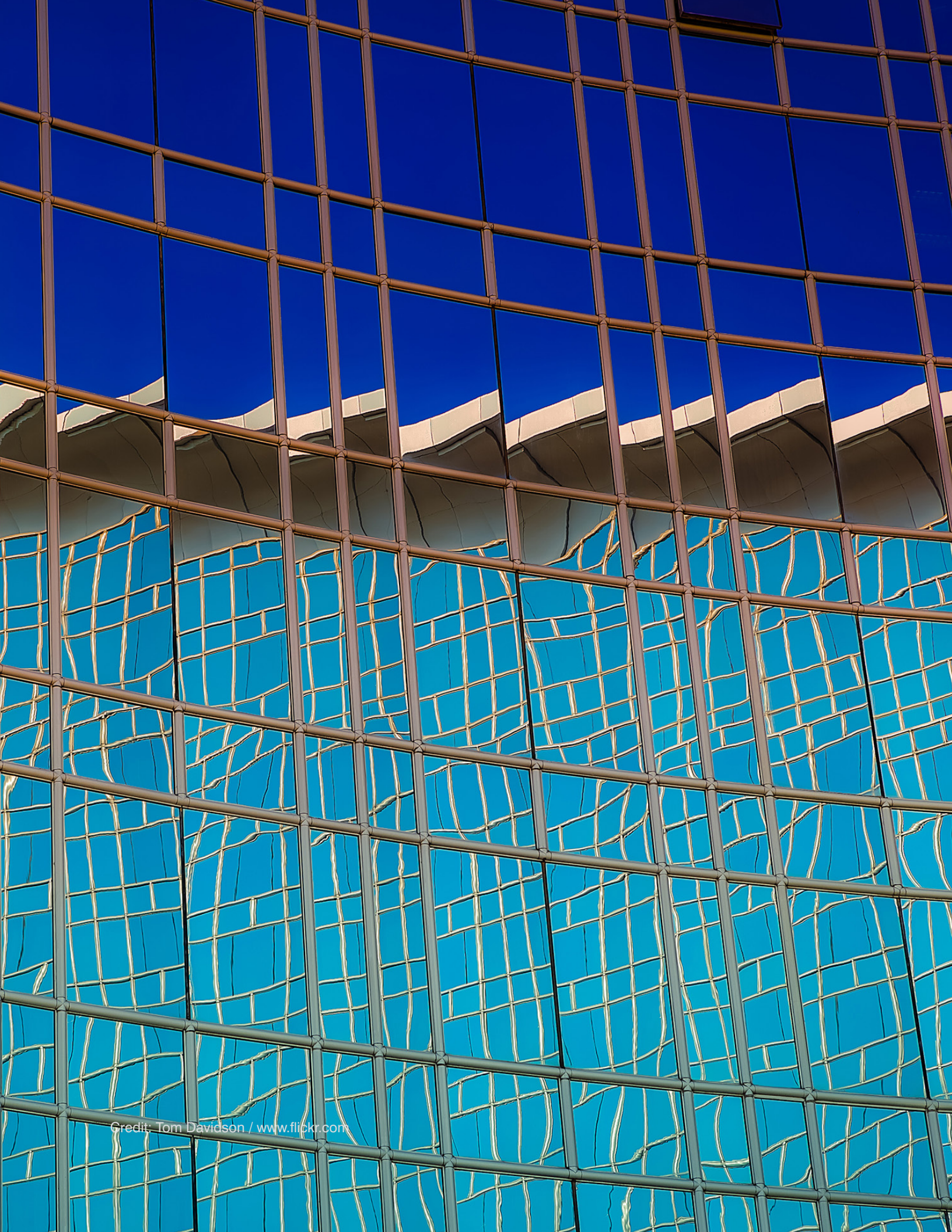
Deadline 2020 highlights that it is the Buildings Sector where the highest proportion of actions must be taken. And within the Buildings Sector, retrofit and financial support or incentives for commercial and residential buildings together are projected to deliver 70% of emission savings. The C40 Private Building Efficiency (PBE) Network, co-led by Tokyo and Sydney, supports cities to replicate, improve and accelerate climate action across the commercial and residential sectors.

This report, the second in a series, was produced using examples from the PBE Network. Like the first report, it serves as a reference and evidence base for city officials when developing or improving building energy policies. The first report was incredibly useful for cities who used it to incorporate best practices from around the world, including financial incentives, sectoral benchmarking, and building optimisation programmes into their energy plans and roadmaps. Other cities used it as an evidence base to push for the introduction of new, ambitious building energy policies or expand already successful schemes. We hope this report will prove just as valuable.

To limit warming to 1.5 degrees all cities, not just C40 cities, are going to need to take action. Therefore C40 and Tokyo Metropolitan Government (TMG) are pleased to be able to share the valuable lessons and analysis in this report with policy makers around the world.

C40 would like to thank all those involved in producing the report - the generosity of TMG and in particular the dedication of Yuko Nishida; Greg Trencher from Clark University for his lead role in writing the report; and the efforts of CSR Design Green Investment Advisory, in particular Tomoko Takagi. And finally, to the city staff who contributed their time to help create this valuable resource.





Credit: Tom Davidson / www.flickr.com

## Contributions and acknowledgements

### **Tokyo Metropolitan Government**

Yuko Nishida (Research design, project direction)

### **C40 Cities Climate Leadership Group**

Frankie Downy (Research design, project direction)

### **CSR Design Green Investment Advisory, Co., Ltd.**

Dr. Tomoko Takagi (Co-lead author, research design, project direction)

Ryuichi Horie (Project direction)

Benjamin Tweed (Case research)

Kanayo Hara (Case research)

Randa Ziadeh (Case research)

Dr. Hyun Young Ryu (Case research)

Ying Xiangru (Case research)

### **Clark University**

Ass. Prof. Gregory Trencher (Lead author, research design, project direction)

Kyle Pilkington (Language editing)

### **City programme officials interviewed and providing information**

- **Boston:** Milton Bevington (Senior City Advisor, City Energy Project, Boston)
- **Chicago:** Jamie Ponce (C40 City Advisor, Chicago), Amy Jewel (Senior City Advisor, City Energy Project, Chicago)
- **London:** Louise Clancy (Principal Policy and Programme Officer, Greater London Authority), Dr Katherine Eames (Business Energy Challenge Delivery Team, Greater London Authority)
- **Mexico City:** Ruben Lazos (Director General of Environmental Regulation, Mexico City Secretary of the Environment), Graciela de Paz (Director of Energy and Environmental Economy, Mexico City), Rafael Ramos (C40 City Advisor, Mexico City)
- **Seoul:** Kim Kum-ho (Assistant Director, Environmental Policy Division, Seoul Metropolitan Government)
- **Shenzhen:** Yu Han (Sino-US Project Department Board Office Strategic Development Department, Department Manager, Shenzhen Institute of Building Research), Tingyu He (C40 City Advisor, Shenzhen)
- **Tokyo:** Kazuhiko Ueda (Director for Carbon Reporting Program, Bureau of Environment, Tokyo Metropolitan Government), Tomoaki Arai (Deputy Director for Carbon Reporting Program, Bureau of Environment, Tokyo Metropolitan Government)

Design and layout: Edward Cooper

### **Suggested citation**

Trencher, G., Takagi, T., Nishida, Y., Downy, F. 2017. *Urban Efficiency II. Seven Innovative City Programmes for Existing Building Energy Efficiency*. Tokyo Metropolitan Government Bureau of Environment, C40 Cities Climate Leadership Group, CSR Design Green Investment Advisory, Co., Ltd. London.