



図 30 勝浦での気象モデル WRF の計算値と観測データにおける気温の比較
 緑点：気象モデル、青線：観測値

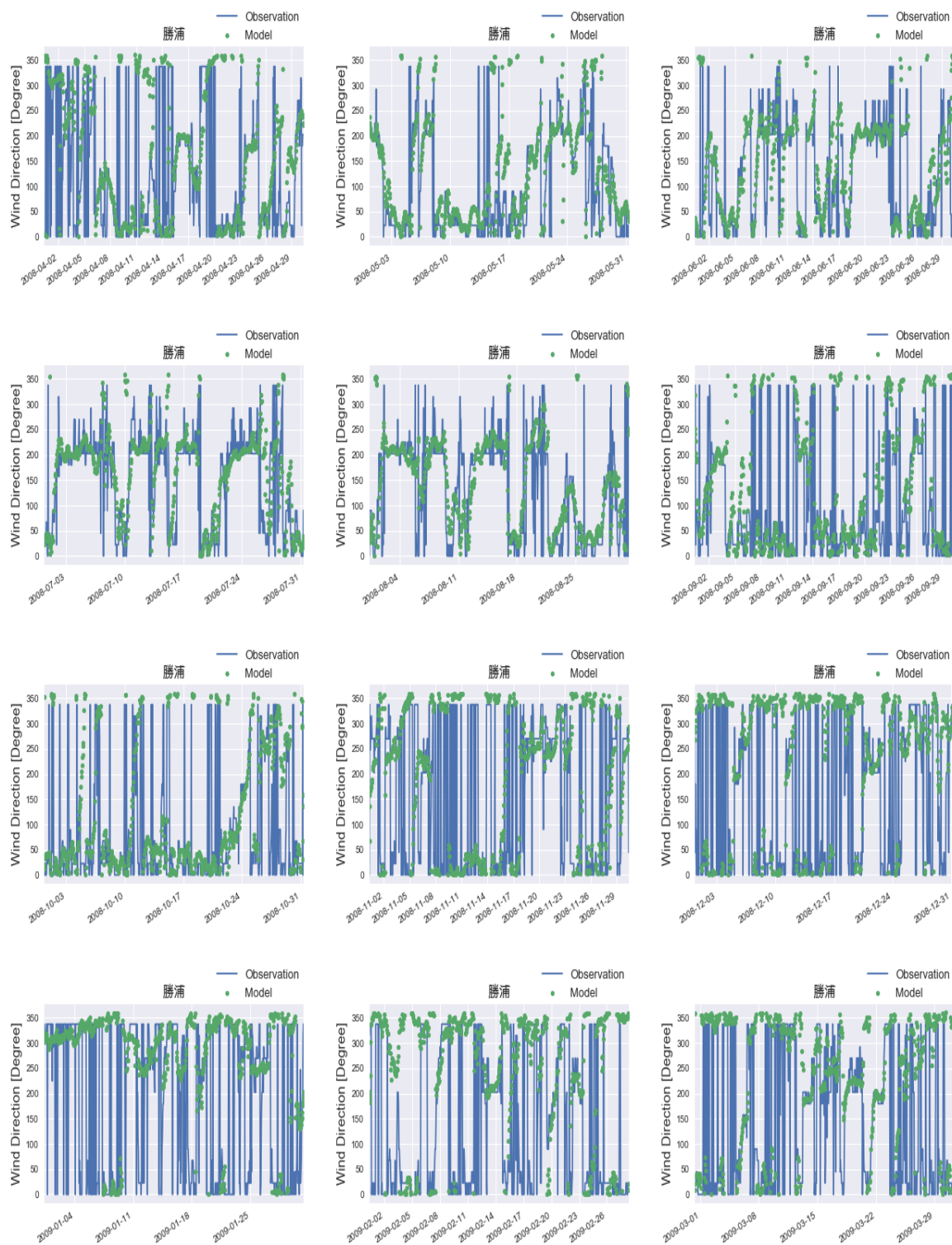


図 31 勝浦での気象モデル WRF の計算値と観測データにおける風向の比較
 緑点：気象モデル、青線：観測値

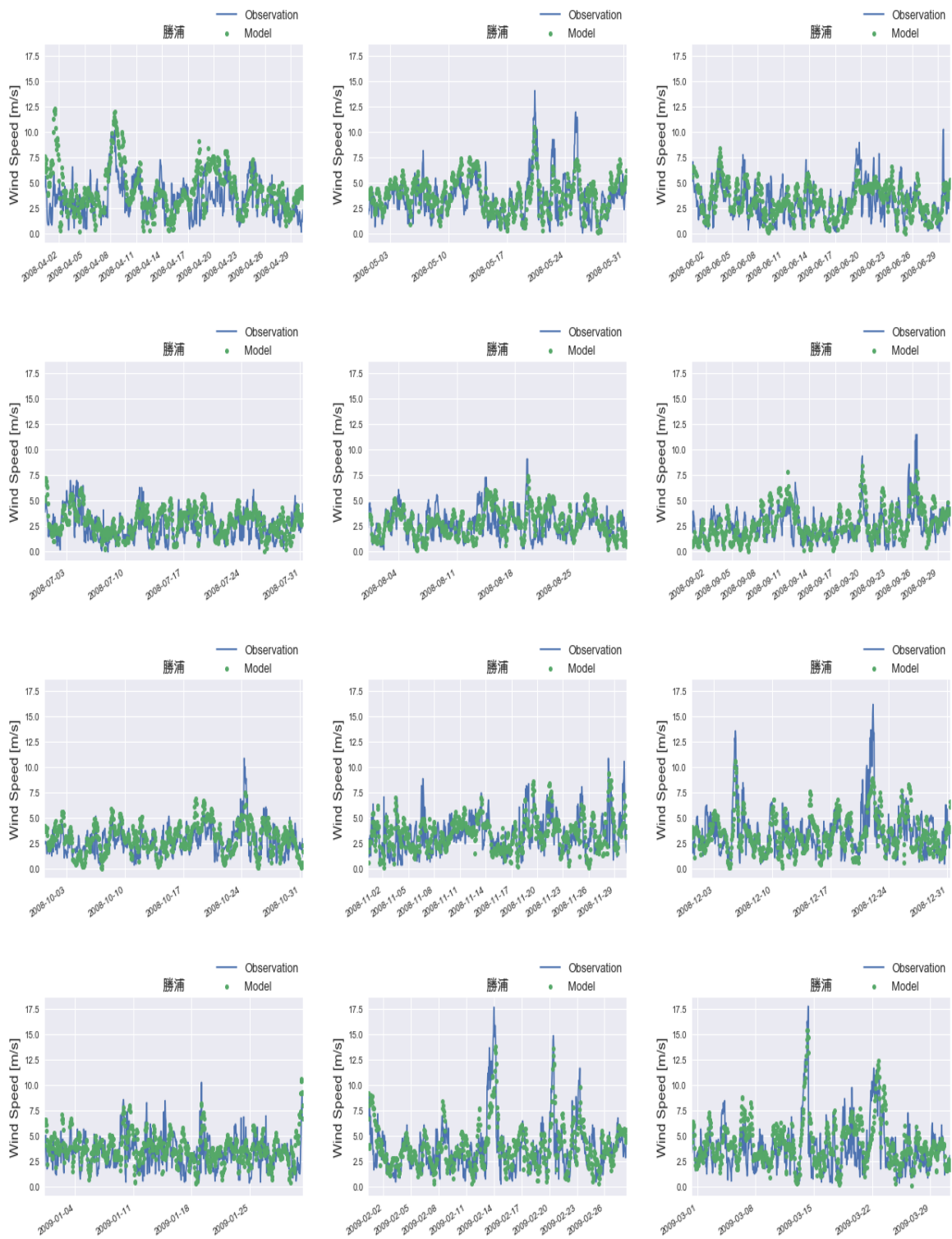


図 32 勝浦での気象モデル WRF の計算値と観測データにおける風速の比較
 緑点：気象モデル、青線：観測値

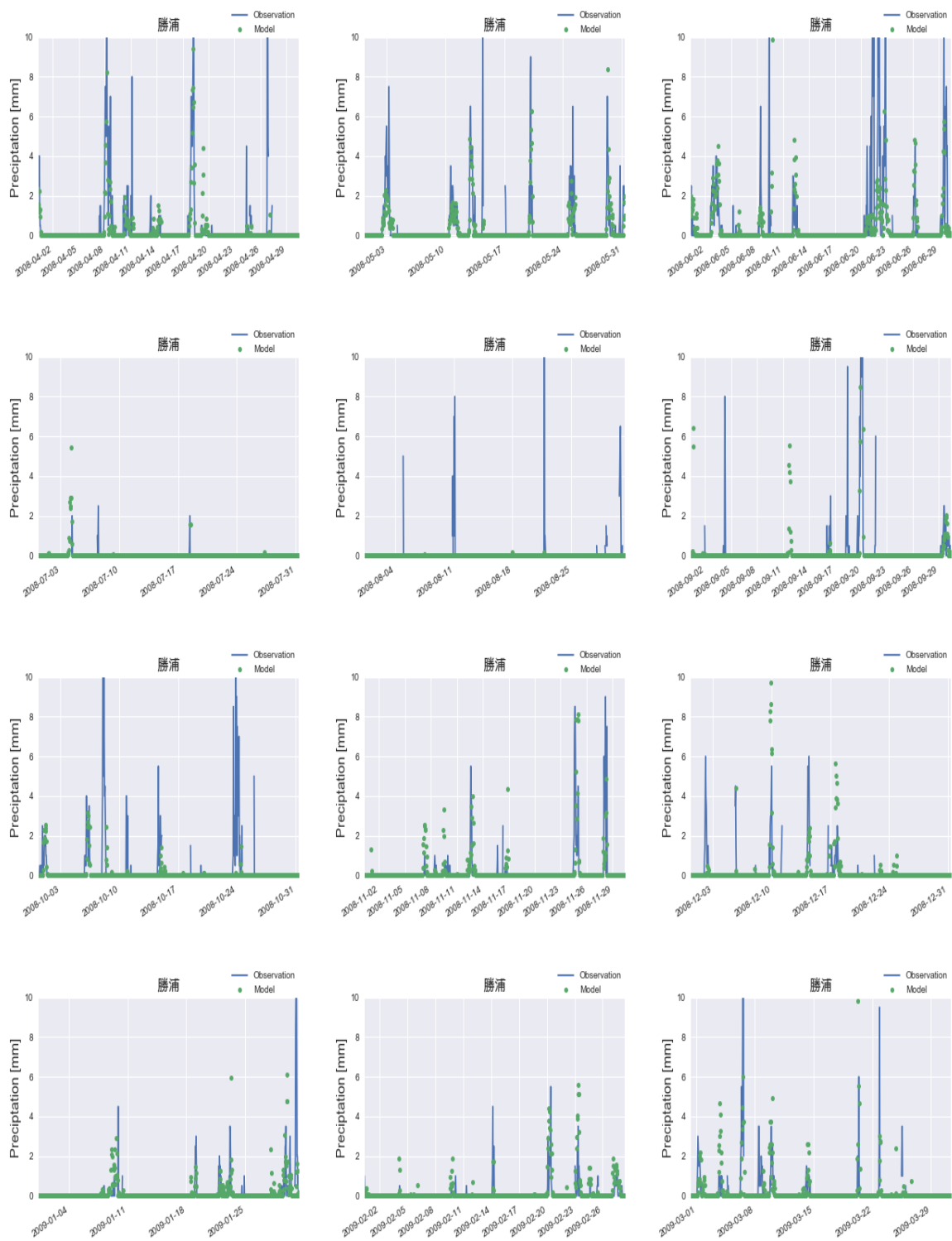


図 33 勝浦での気象モデル WRF の計算値と観測データにおける降雨量の比較
 緑点：気象モデル、青線：観測値

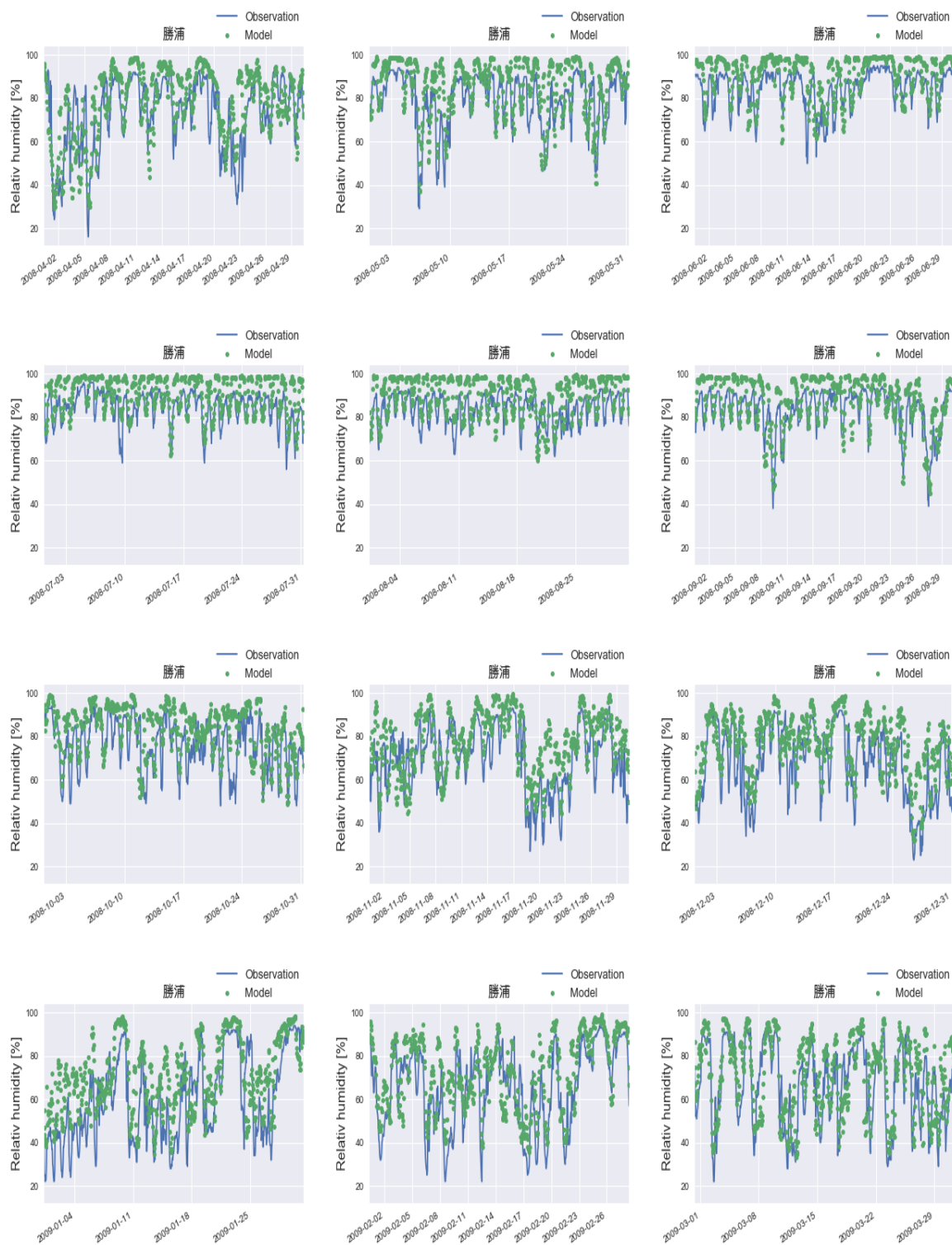


図 34 勝浦での気象モデル WRF の計算値と観測データにおける相対湿度の比較
 緑点：気象モデル、青線：観測値

表 30 勝浦における気温の統計値

YEAR	MONTH	Ave(Obs)	Ave(Model)	Ratio	NMB	NME	NRMSE	R
2008	4	13.942917	12.269321	0.879968	-0.120032	0.157471	0.157471	0.780466
2008	5	17.506183	16.104625	0.919939	-0.080061	0.099965	0.099965	0.872810
2008	6	19.935694	18.683174	0.937172	-0.062828	0.077198	0.077198	0.790621
2008	7	24.729301	23.379113	0.945401	-0.054599	0.071627	0.071627	0.806119
2008	8	26.200538	24.358587	0.929698	-0.070302	0.077055	0.077055	0.751995
2008	9	23.329903	21.429763	0.918553	-0.081462	0.087600	0.087600	0.890457
2008	10	19.354032	16.867070	0.871502	-0.128498	0.132531	0.132531	0.842365
2008	11	13.780833	11.843293	0.859403	-0.140597	0.184109	0.184109	0.807224
2008	12	10.453898	7.483089	0.715818	-0.284182	0.298318	0.298318	0.884500
2009	1	7.413997	5.277578	0.711840	-0.287402	0.353557	0.353557	0.806900
2009	2	8.385863	6.388667	0.761838	-0.238162	0.305342	0.305342	0.836830
2009	3	9.821102	8.130243	0.827834	-0.172166	0.221726	0.221726	0.879504
ALL	ALL	16.286058	14.397969	0.884067	-0.115891	0.137584	0.024521	0.961691

表 31 勝浦における風向の統計値

YEAR	MONTH	0	1	2	3	4	5	6	7	8
2008	4	29.207232	32.406120	13.073713	6.815021	5.424200	2.920723	5.563282	3.059805	1.529903
2008	5	29.110512	34.097035	19.002695	7.681941	3.504043	2.021563	1.886792	1.752022	0.943396
2008	6	27.615063	35.704324	15.202232	6.973501	3.905160	2.510460	3.905160	2.789400	1.394700
2008	7	25.945946	32.702703	15.945946	10.810811	4.729730	2.702703	3.783784	2.702703	0.675676
2008	8	20.754717	40.970350	15.498652	8.894879	4.851752	2.695418	2.695418	2.425876	1.212938
2008	9	27.615063	35.564854	15.341702	7.531381	5.160391	2.928870	1.673640	3.068340	1.115760
2008	10	28.629032	36.962366	16.263441	6.182796	3.763441	2.284946	2.016129	2.284946	1.612903
2008	11	19.583333	40.138889	16.805556	7.083333	3.055556	4.305556	4.027778	3.750000	1.250000
2008	12	26.478495	38.978495	15.456989	9.543011	2.688172	2.688172	2.284946	0.940860	0.940860
2009	1	21.668910	40.376851	16.419919	6.998654	5.114401	2.960969	3.499327	1.345895	1.615074
2009	2	21.875000	37.648810	17.410714	7.440476	4.166667	4.017857	4.017857	2.232143	1.190476
2009	3	25.672043	37.903226	15.322581	7.930108	4.973118	3.494624	1.881720	2.016129	0.806452
ALL	ALL	25.365965	36.962489	15.976670	7.833943	4.277219	2.950595	3.087832	2.355901	1.189387

表 32 勝浦における風速の統計値

YEAR	MONTH	Ave(Obs)	Ave(Model)	Ratio	NMB	NME	NRMSE	R
2008	4	3.518472	4.327242	1.229864	0.229864	0.471911	0.471911	0.504925
2008	5	3.622984	3.933739	1.085773	0.085773	0.335255	0.335255	0.694461
2008	6	3.108889	3.280849	1.055312	0.055312	0.378821	0.378821	0.585091
2008	7	2.521640	2.868038	1.137370	0.137370	0.409141	0.409141	0.575949
2008	8	2.742127	2.876546	1.049020	0.048569	0.370441	0.370441	0.537833
2008	9	2.592211	2.835750	1.093950	0.092115	0.399310	0.399310	0.651209
2008	10	2.737366	3.077859	1.124387	0.124387	0.411621	0.411621	0.541950
2008	11	3.408472	3.528471	1.035206	0.035206	0.382048	0.382048	0.535430
2008	12	3.578091	3.496016	0.977062	-0.022938	0.391269	0.391269	0.626236
2009	1	3.339973	3.879842	1.161639	0.162076	0.426911	0.426911	0.386737
2009	2	3.775893	3.899465	1.032727	0.032727	0.390332	0.390332	0.666638
2009	3	3.826747	4.322240	1.129481	0.129481	0.377504	0.377504	0.715228
ALL	ALL	3.227521	3.524485	1.092010	0.091930	0.394709	0.196394	0.618763

表 33 勝浦における降雨量の統計値

YEAR	MONTH	Ave(Obs)	Ave(Model)	Ratio	NMB	NME	NRMSE	R
2008	4	3.518472	4.327242	1.229864	0.229864	0.471911	0.471911	0.504925
2008	5	3.622984	3.933739	1.085773	0.085773	0.335255	0.335255	0.694461
2008	6	3.108889	3.280849	1.055312	0.055312	0.378821	0.378821	0.585091
2008	7	2.521640	2.868038	1.137370	0.137370	0.409141	0.409141	0.575949
2008	8	2.742127	2.876546	1.049020	0.048569	0.370441	0.370441	0.537833
2008	9	2.592211	2.835750	1.093950	0.092115	0.399310	0.399310	0.651209
2008	10	2.737366	3.077859	1.124387	0.124387	0.411621	0.411621	0.541950
2008	11	3.408472	3.528471	1.035206	0.035206	0.382048	0.382048	0.535430
2008	12	3.578091	3.496016	0.977062	-0.022938	0.391269	0.391269	0.626236
2009	1	3.339973	3.879842	1.161639	0.162076	0.426911	0.426911	0.386737
2009	2	3.775893	3.899465	1.032727	0.032727	0.390332	0.390332	0.666638
2009	3	3.826747	4.322240	1.129481	0.129481	0.377504	0.377504	0.715228
ALL	ALL	3.227521	3.524485	1.092010	0.091930	0.394709	0.196394	0.618763

表 34 勝浦における相対湿度の統計値

YEAR	MONTH	Ave(Obs)	Ave(Model)	Ratio	NMB	NME	NRMSE	R
2008	4	72.47361	77.54313	1.06995	0.06995	0.13833	0.13833	0.72193
2008	5	79.30780	86.16972	1.08652	0.08652	0.11808	0.11808	0.72606
2008	6	84.33611	90.85487	1.07730	0.07730	0.09295	0.09295	0.74548
2008	7	84.29032	91.43318	1.08474	0.08474	0.09136	0.09136	0.75450
2008	8	83.30376	90.45033	1.08579	0.08579	0.09926	0.09926	0.70136
2008	9	83.00974	87.71197	1.05665	0.05670	0.08195	0.08195	0.83104
2008	10	75.66398	82.98239	1.09672	0.09672	0.12718	0.12718	0.65053
2008	11	69.82361	77.03590	1.10329	0.10329	0.14849	0.14849	0.76656
2008	12	67.52688	76.44129	1.13201	0.13201	0.16470	0.16470	0.78443
2009	1	60.93001	71.36333	1.17123	0.17121	0.23156	0.23156	0.74596
2009	2	65.43006	72.14965	1.10270	0.10270	0.16491	0.16491	0.77708
2009	3	67.14247	71.18539	1.06021	0.06021	0.14918	0.14918	0.77879
ALL	ALL	74.47853	81.32976	1.09199	0.09200	0.12983	0.02531	0.80345

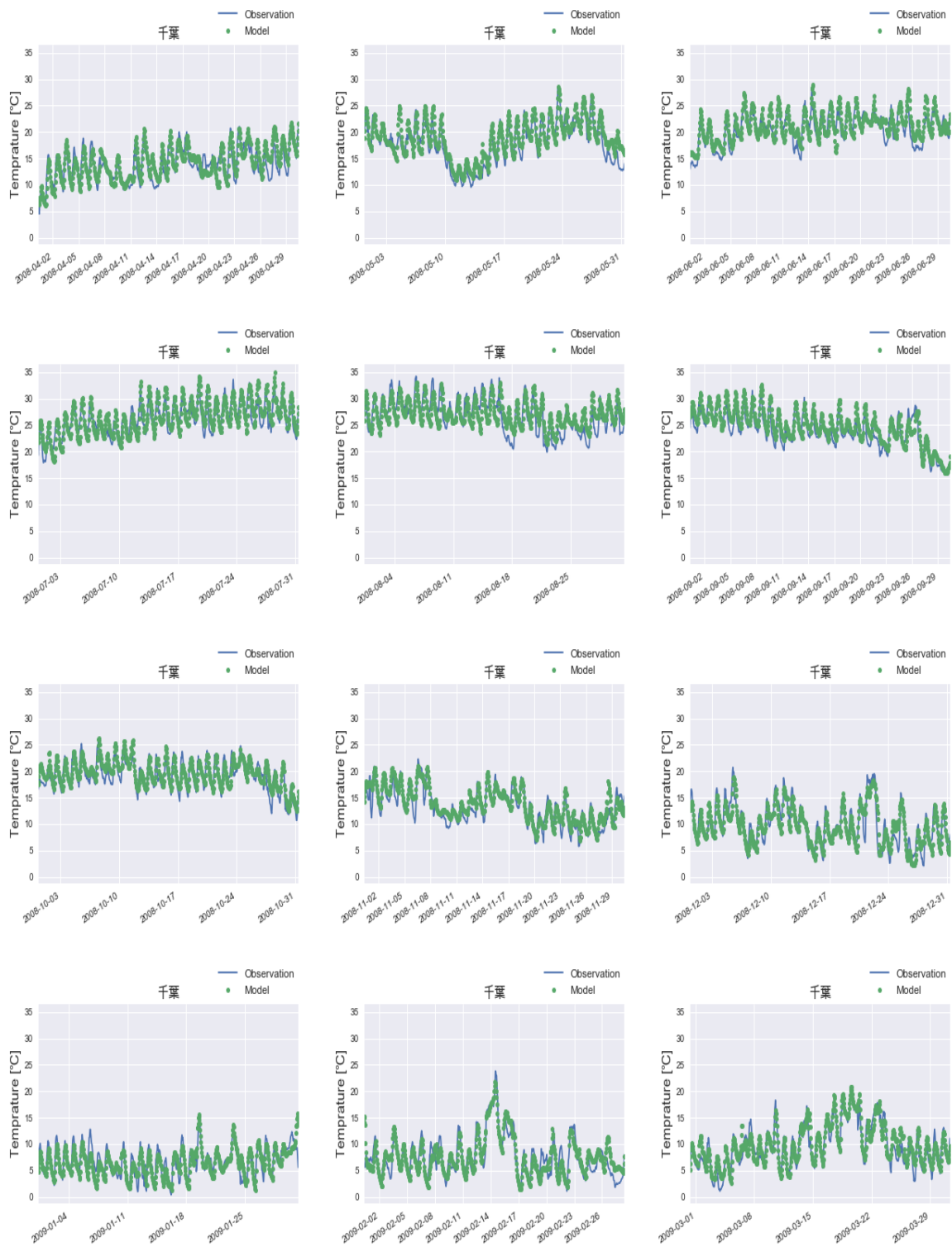


図 35 千葉での気象モデル WRF の計算値と観測データにおける気温の比較
 緑点：気象モデル、青線：観測値

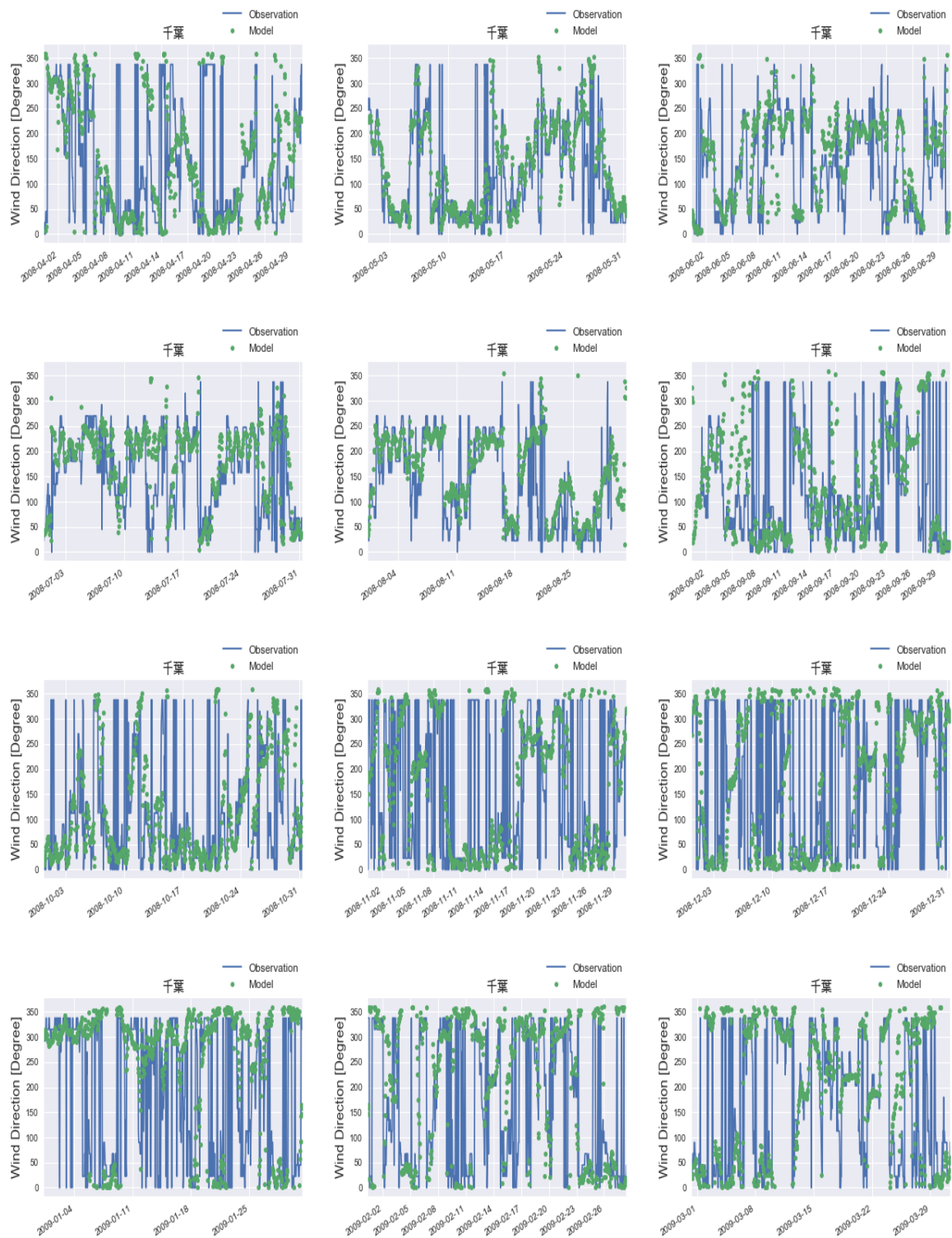


図 36 千葉での気象モデル WRF の計算値と観測データにおける風向の比較
 緑点：気象モデル、青線：観測値

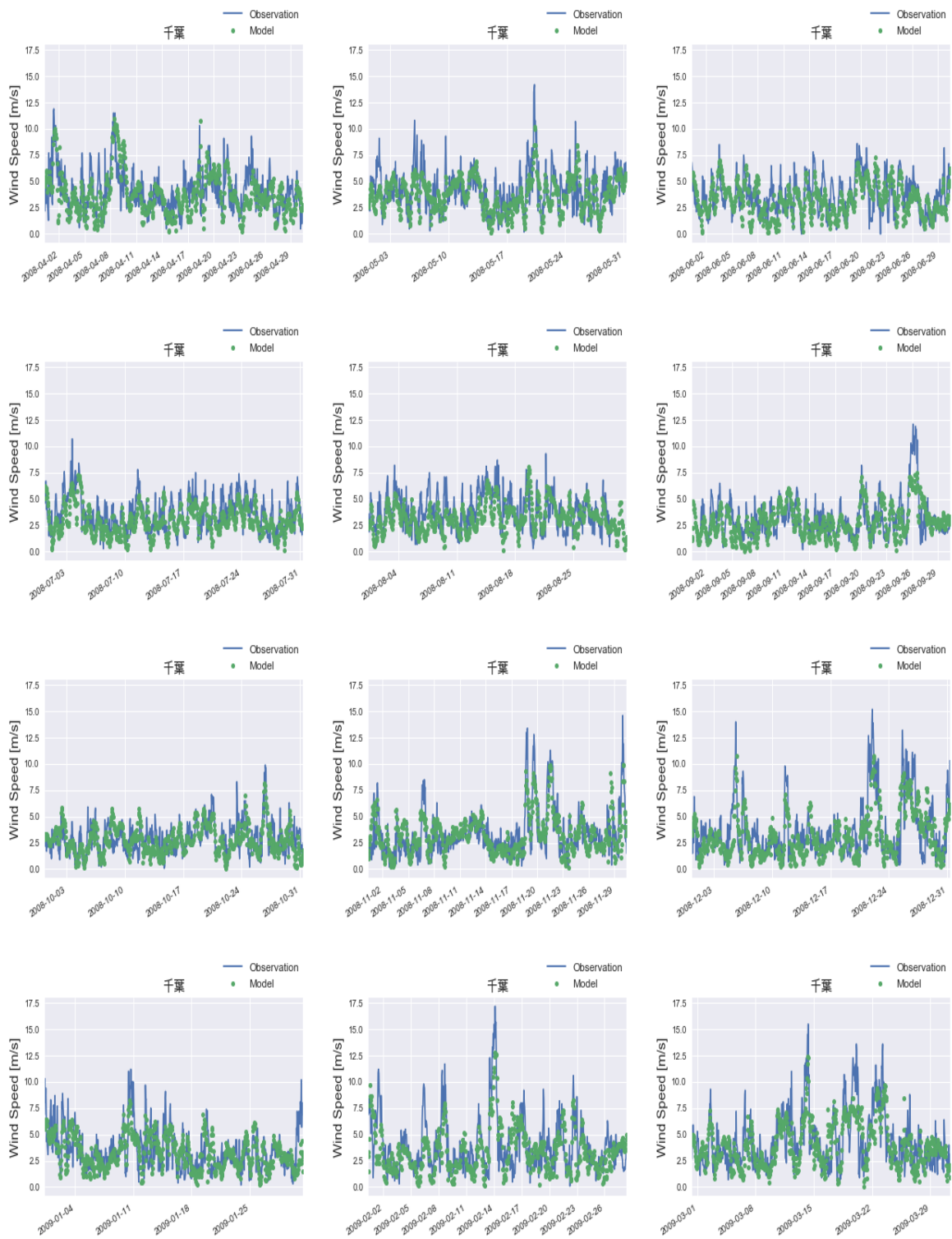


図 37 千葉での気象モデル WRF の計算値と観測データにおける風速の比較
 緑点：気象モデル、青線：観測値

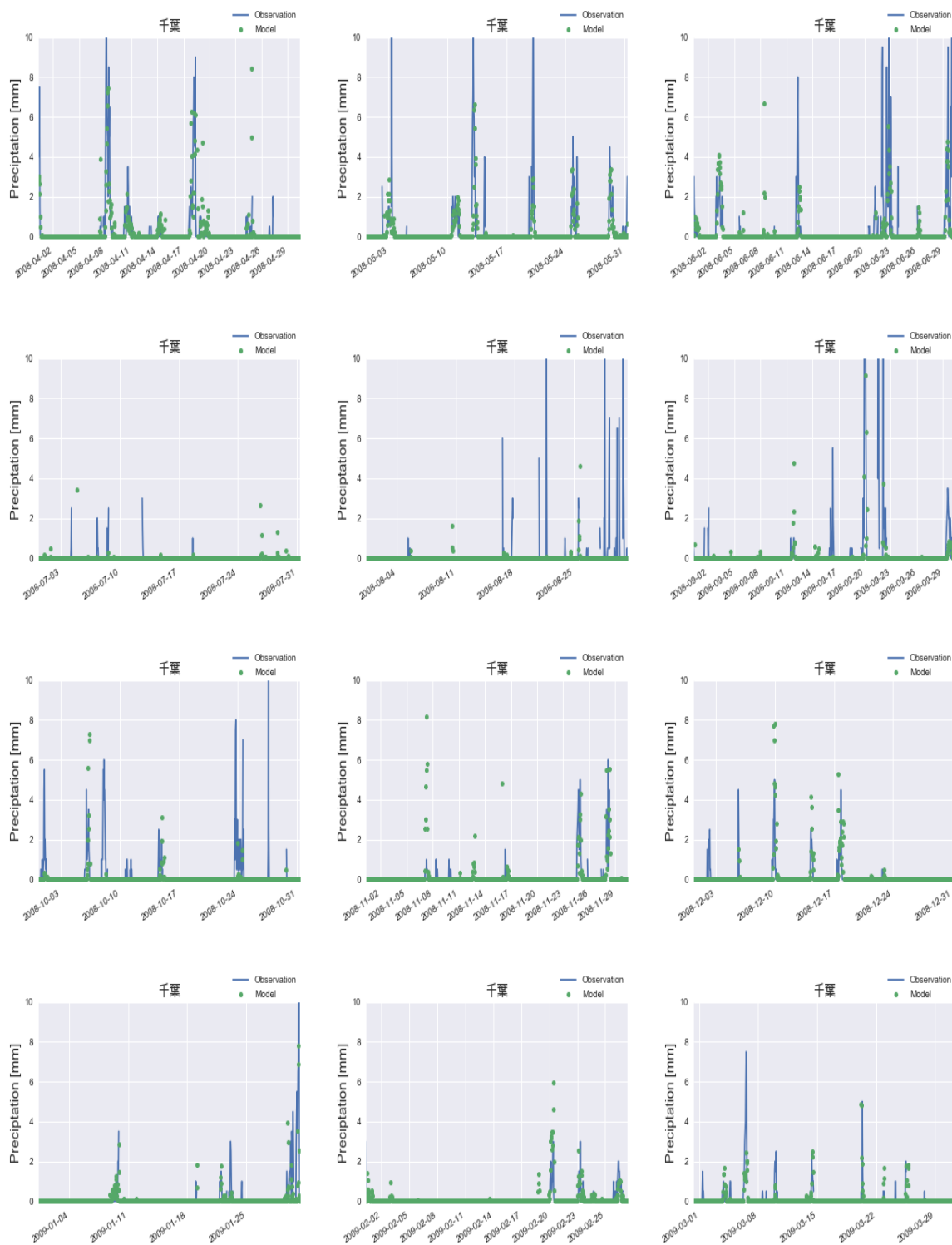


図 38 千葉での気象モデル WRF の計算値と観測データにおける降雨量の比較
 緑点：気象モデル、青線：観測値

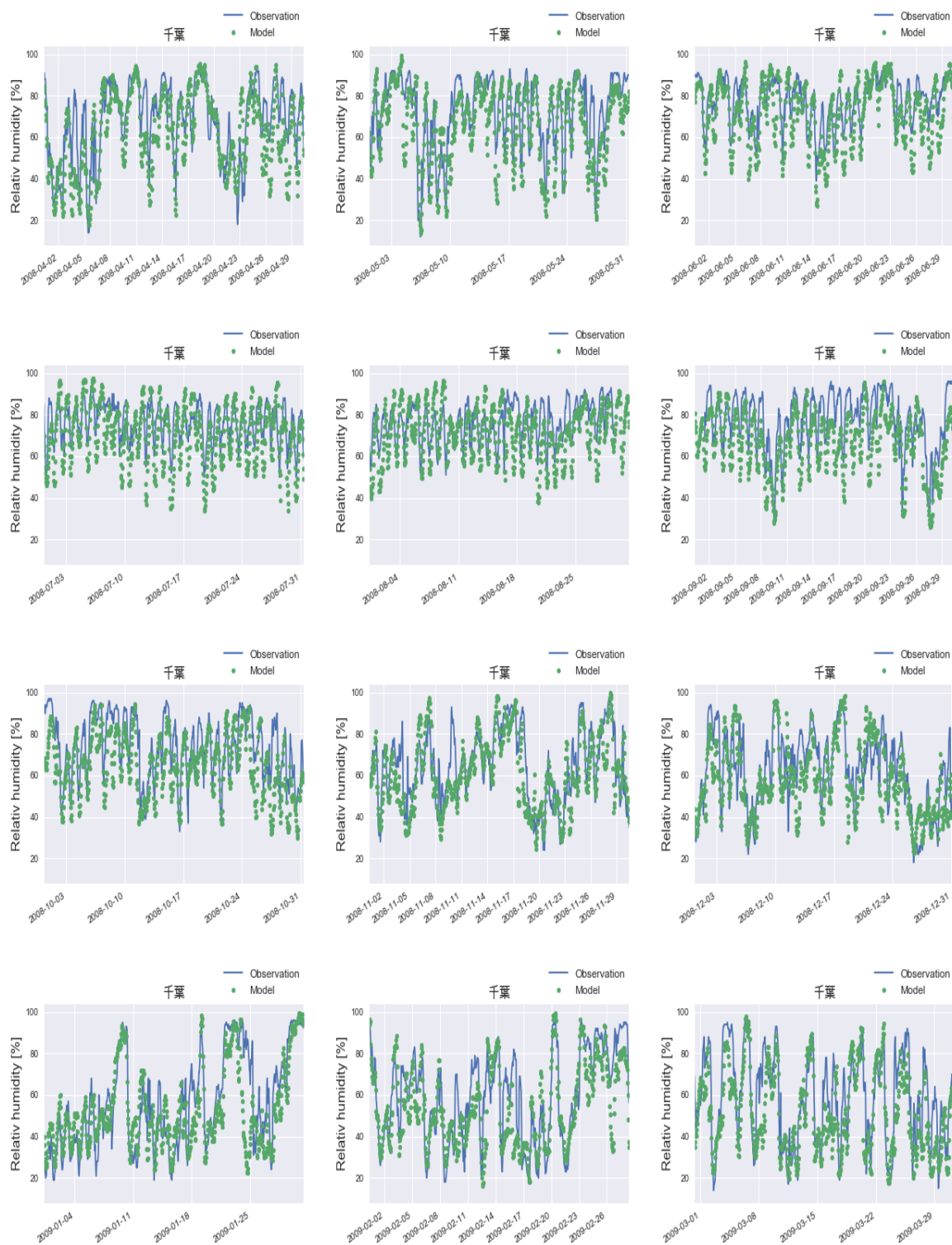


図 39 千葉での気象モデル WRF の計算値と観測データにおける相対湿度の比較
 緑点：気象モデル、青線：観測値

表 35 千葉における気温の統計値

YEAR	MONTH	Ave(Obs)	Ave(Model)	Ratio	NMB	NME	NRMSE	R
2008	4	13.950972	14.360161	1.029330	0.029330	0.104477	0.104477	0.839428
2008	5	17.854435	18.733245	1.049221	0.049221	0.078803	0.078803	0.920729
2008	6	20.768750	21.359215	1.028430	0.028430	0.065860	0.065860	0.818557
2008	7	26.240188	26.508472	1.010224	0.010224	0.052301	0.052301	0.849142
2008	8	26.845749	27.159097	1.011672	0.011437	0.066256	0.066256	0.742652
2008	9	23.830000	24.627782	1.033478	0.033478	0.056550	0.056550	0.907086
2008	10	19.097984	19.621327	1.027403	0.027403	0.062186	0.062186	0.862815
2008	11	13.213750	13.711218	1.037648	0.037648	0.092410	0.092410	0.893292
2008	12	9.737769	9.528516	0.978511	-0.021489	0.129464	0.129464	0.903476
2009	1	6.714113	6.444468	0.959839	-0.040161	0.181832	0.181832	0.798007
2009	2	7.642411	7.638830	0.999532	-0.000468	0.192872	0.192872	0.881351
2009	3	9.688441	10.013032	1.033503	0.033503	0.136900	0.136900	0.910959
ALL	ALL	16.348270	16.695593	1.021245	0.020993	0.083659	0.009291	0.975549

表 36 千葉における風向の統計値

YEAR	MONTH	0	1	2	3	4	5	6	7	8
2008	4	22.08333	34.16667	19.58333	9.02778	3.75000	4.02778	3.61111	2.22222	1.52778
2008	5	24.49529	39.30013	15.20861	9.15209	4.84522	3.09556	1.61507	1.34590	0.94213
2008	6	22.03626	35.14644	16.87587	8.92608	6.97350	3.62622	2.64993	2.78940	0.97629
2008	7	23.04582	35.98383	17.38544	7.68194	4.17790	4.58221	3.36927	2.42588	1.34771
2008	8	25.87209	38.22674	15.84302	5.95930	5.08721	3.19767	2.03488	2.47093	1.30814
2008	9	21.26761	30.84507	20.28169	11.12676	4.50704	4.50704	4.78873	1.40845	1.26761
2008	10	23.64865	34.18919	21.35135	7.16216	3.91892	2.56757	2.43243	3.51351	1.21622
2008	11	22.53129	33.10153	17.66342	8.76217	5.14604	2.92072	5.28512	3.61613	0.97357
2008	12	24.05914	30.51075	20.16129	8.19892	6.18280	4.03226	2.55376	3.09140	1.20968
2009	1	19.78466	37.68506	16.95828	9.95962	4.44145	3.76851	3.23015	2.96097	1.21131
2009	2	23.24888	34.42623	16.84054	5.06706	5.51416	4.91803	5.06706	4.02385	0.89419
2009	3	28.22581	36.29032	14.24731	8.73656	4.43548	2.01613	2.68817	2.28495	1.07527
ALL	ALL	23.36136	34.99597	17.70533	8.34005	4.90727	3.59406	3.25999	2.67250	1.16346

表 37 千葉における風速の統計値

YEAR	MONTH	Ave(Obs)	Ave(Model)	Ratio	NMB	NME	NRMSE	R
2008	4	4.126389	3.732428	0.904527	-0.095473	0.330992	0.330992	0.623188
2008	5	4.192204	3.748894	0.894254	-0.105746	0.301929	0.301929	0.625961
2008	6	3.582083	3.262283	0.910722	-0.089278	0.338750	0.338750	0.563739
2008	7	3.627628	2.949969	0.813195	-0.188674	0.293304	0.293304	0.722853
2008	8	3.883576	3.240014	0.834286	-0.147346	0.330098	0.330098	0.498721
2008	9	3.150211	2.836250	0.900336	-0.092676	0.352239	0.352239	0.612207
2008	10	2.930645	2.796402	0.954193	-0.045807	0.368864	0.368864	0.509773
2008	11	3.410972	3.318874	0.973000	-0.027000	0.363590	0.363590	0.673907
2008	12	3.651747	3.189476	0.873411	-0.126589	0.424756	0.424756	0.663684
2009	1	3.493683	3.308538	0.947006	-0.052994	0.391468	0.391468	0.495879
2009	2	3.883929	3.309426	0.852082	-0.147918	0.402478	0.402478	0.640399
2009	3	4.363172	4.018052	0.920902	-0.079098	0.354677	0.354677	0.679920
ALL	ALL	3.690464	3.309454	0.896758	-0.101105	0.353159	0.165164	0.631853

表 38 千葉における降雨量の統計値

YEAR	MONTH	Ave(Obs)	Ave(Model)	Ratio	NMB	NME	NRMSE	R
2008	4	1.151163	0.375729	0.326391	0.199505	1.160060	1.160060	0.250477
2008	5	1.407738	0.209629	0.148912	-0.365497	0.754021	0.754021	0.392688
2008	6	1.346591	0.227046	0.168608	-0.345283	0.943426	0.943426	0.265180
2008	7	0.321429	-0.810955	-2.522970	-0.968511	1.024256	1.024256	-0.028732
2008	8	1.210145	0.019526	0.016135	-0.942787	1.013524	1.013524	-0.007319
2008	9	1.466463	0.229603	0.156569	-0.328846	0.908542	0.908542	0.635336
2008	10	1.180147	0.064094	0.054310	-0.720461	1.038393	1.038393	0.013825
2008	11	0.605042	0.145276	0.240110	0.257764	1.188875	1.188875	0.464050
2008	12	0.811111	0.139901	0.172480	0.283247	1.103575	1.103575	0.519816
2009	1	0.910853	0.091343	0.100283	-0.529830	0.836894	0.836894	0.544322
2009	2	0.373874	0.101940	0.272660	0.459181	1.187566	1.187566	0.536753
2009	3	0.521472	0.087720	0.168217	-0.298718	0.965235	0.965235	0.408311
ALL	ALL	1.015105	0.071296	0.070235	-0.320513	0.971938	0.967299	0.372619

表 39 千葉における相対湿度の統計値

YEAR	MONTH	Ave(Obs)	Ave(Model)	Ratio	NMB	NME	NRMSE	R
2008	4	67.597222	61.312791	0.907031	-0.092969	0.156738	0.156738	0.772795
2008	5	72.958333	65.999853	0.904624	-0.095376	0.133512	0.133512	0.835863
2008	6	77.283333	71.590833	0.926342	-0.073658	0.104959	0.104959	0.837562
2008	7	76.071332	70.275733	0.923814	-0.076073	0.117126	0.117126	0.785248
2008	8	76.404070	71.558934	0.936585	-0.067708	0.116652	0.116652	0.622464
2008	9	77.629944	66.409860	0.855467	-0.145494	0.157605	0.157605	0.803791
2008	10	73.004032	64.783973	0.887403	-0.112597	0.139925	0.139925	0.750890
2008	11	64.454167	60.622114	0.940546	-0.059454	0.139499	0.139499	0.780476
2008	12	62.090054	57.281243	0.922551	-0.077449	0.172969	0.172969	0.740723
2009	1	57.131720	53.743824	0.940700	-0.059300	0.180542	0.180542	0.782649
2009	2	58.889881	53.946287	0.916054	-0.083946	0.189487	0.189487	0.766427
2009	3	58.704301	52.027809	0.886269	-0.113731	0.186128	0.186128	0.797485
ALL	ALL	68.498101	62.505141	0.912509	-0.088891	0.146975	0.034521	0.799744

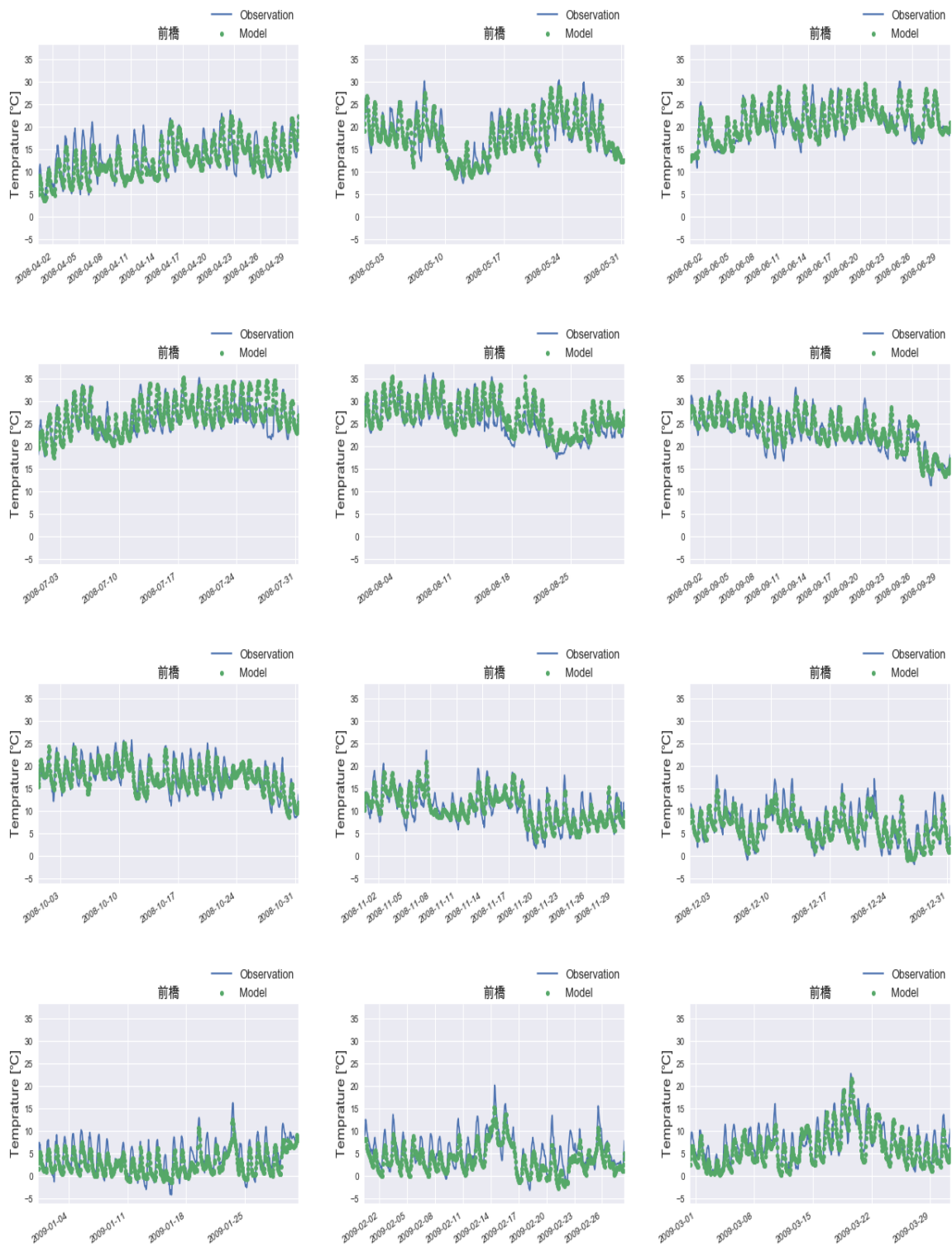


図 40 前橋での気象モデル WRF の計算値と観測データにおける気温の比較
 緑点：気象モデル、青線：観測値

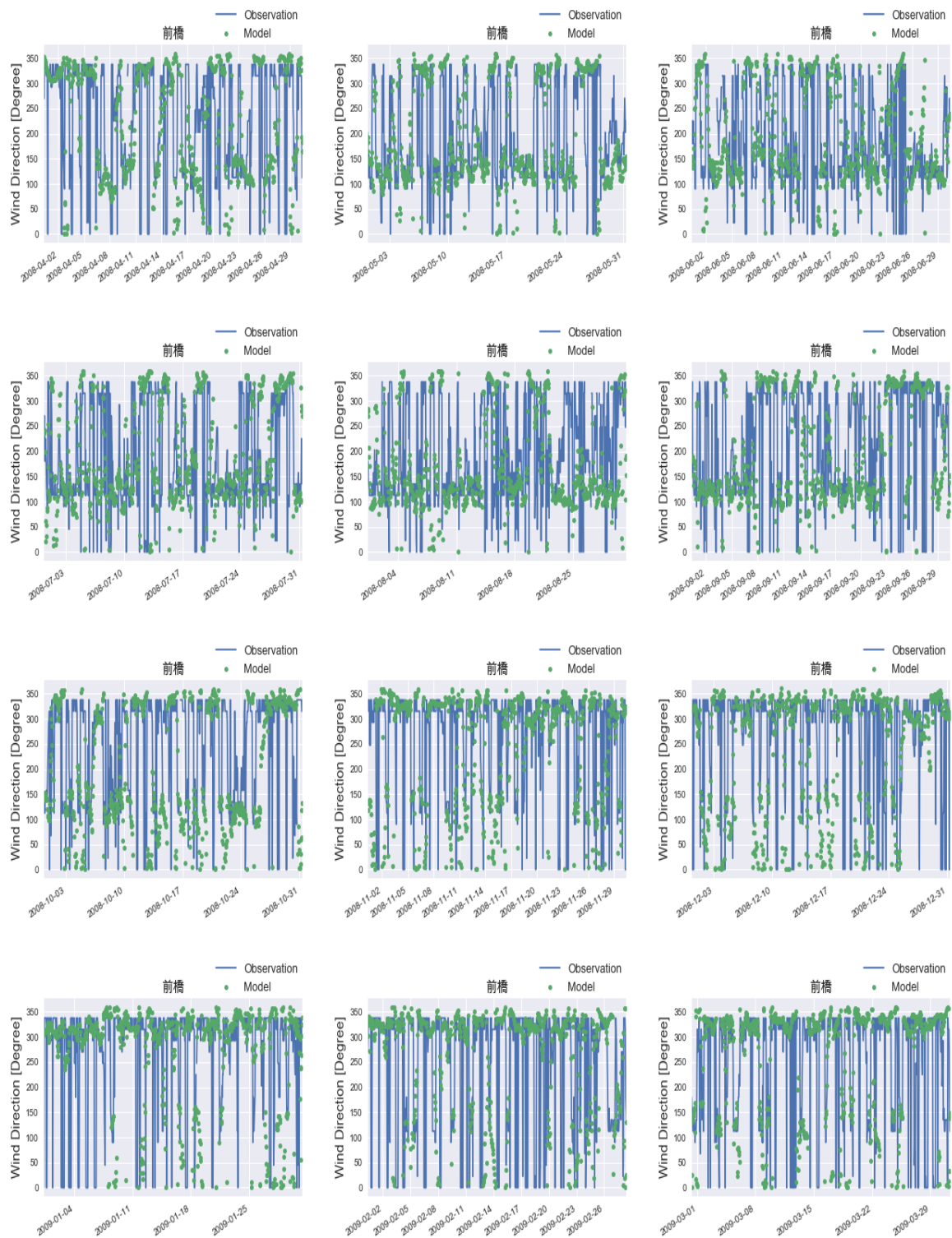


図 41 前橋での気象モデル WRF の計算値と観測データにおける風向の比較
 緑点：気象モデル、青線：観測値

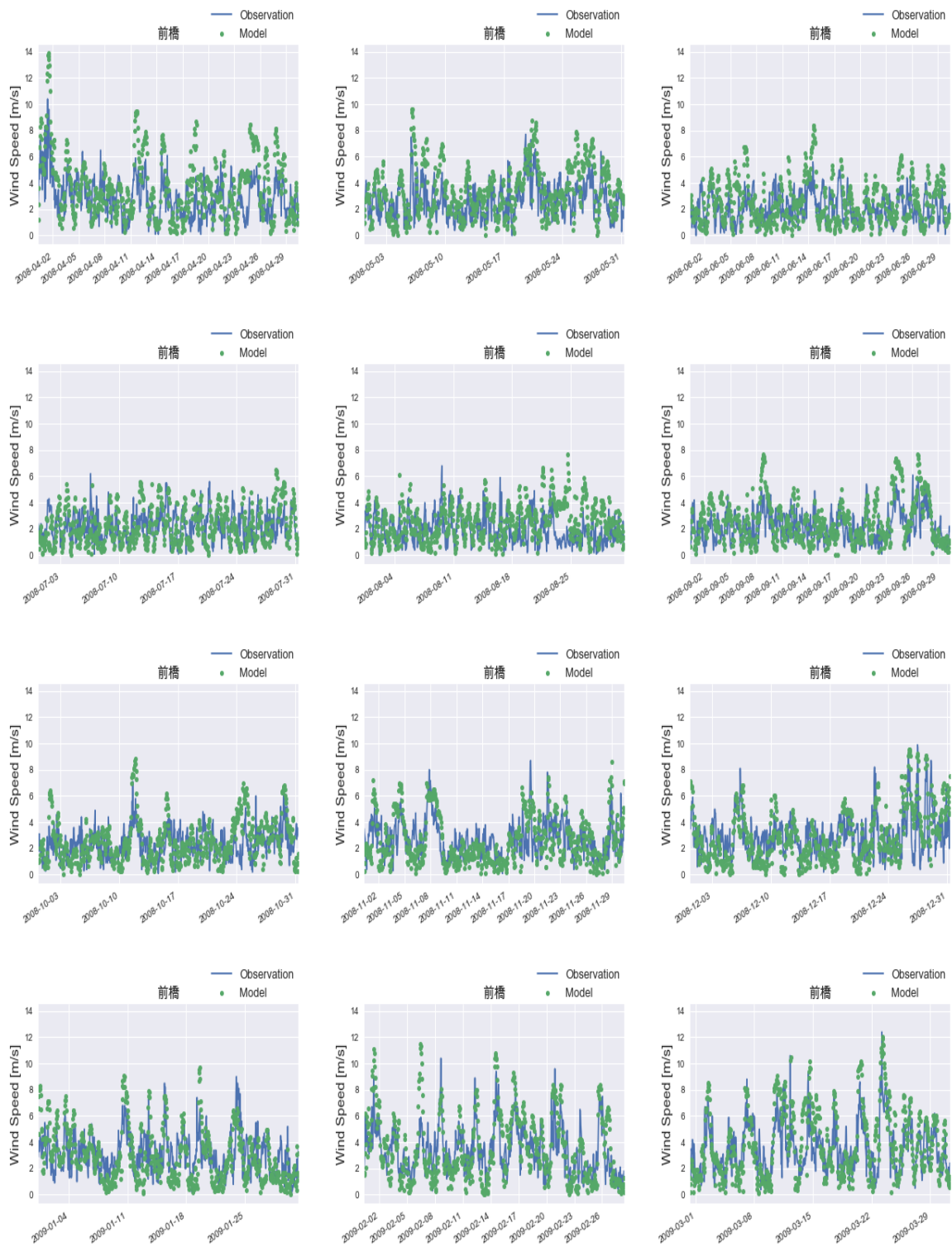


図 42 前橋での気象モデル WRF の計算値と観測データにおける風速の比較
 緑点：気象モデル、青線：観測値

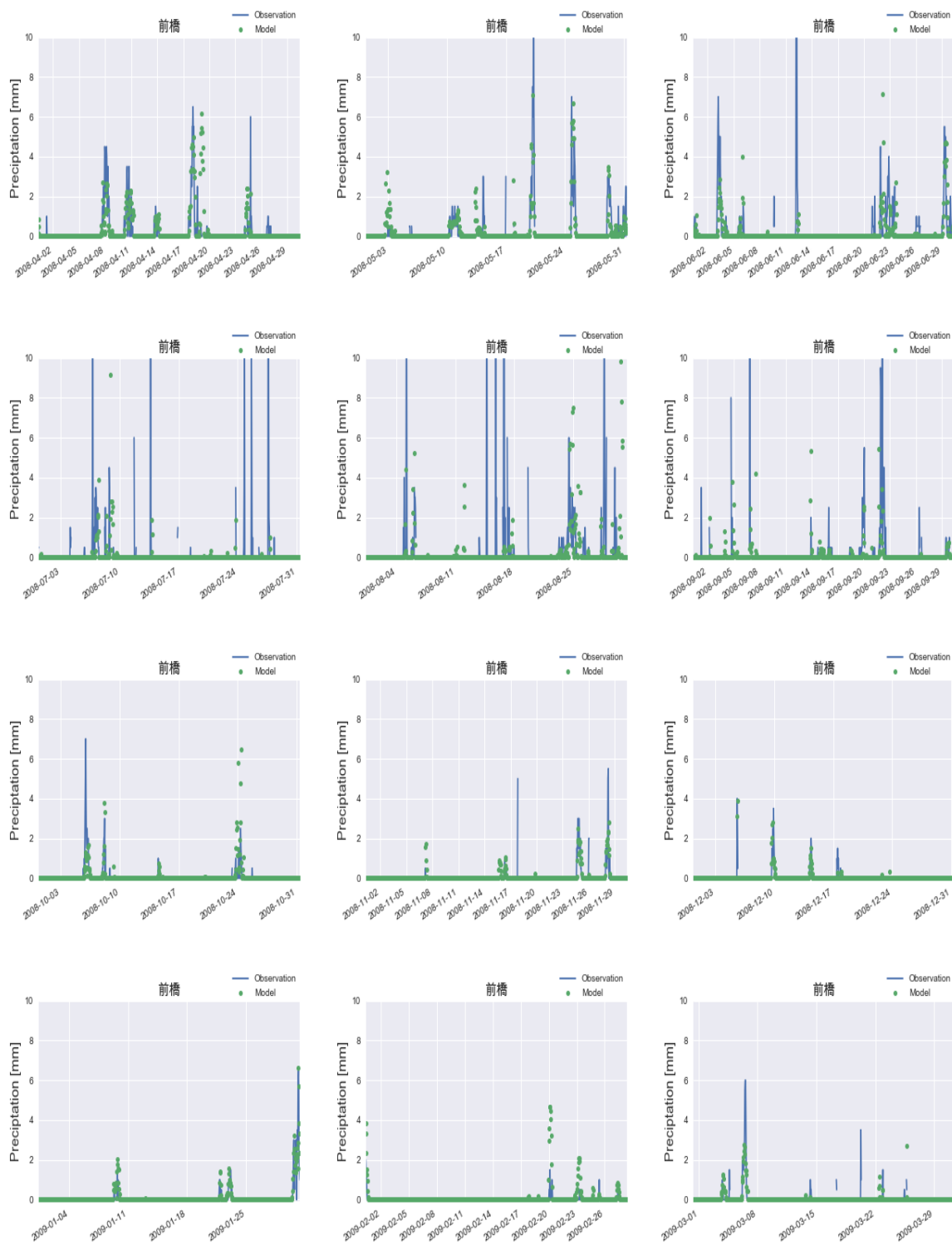


図 43 前橋での気象モデル WRF の計算値と観測データにおける降雨量の比較
 緑点：気象モデル、青線：観測値

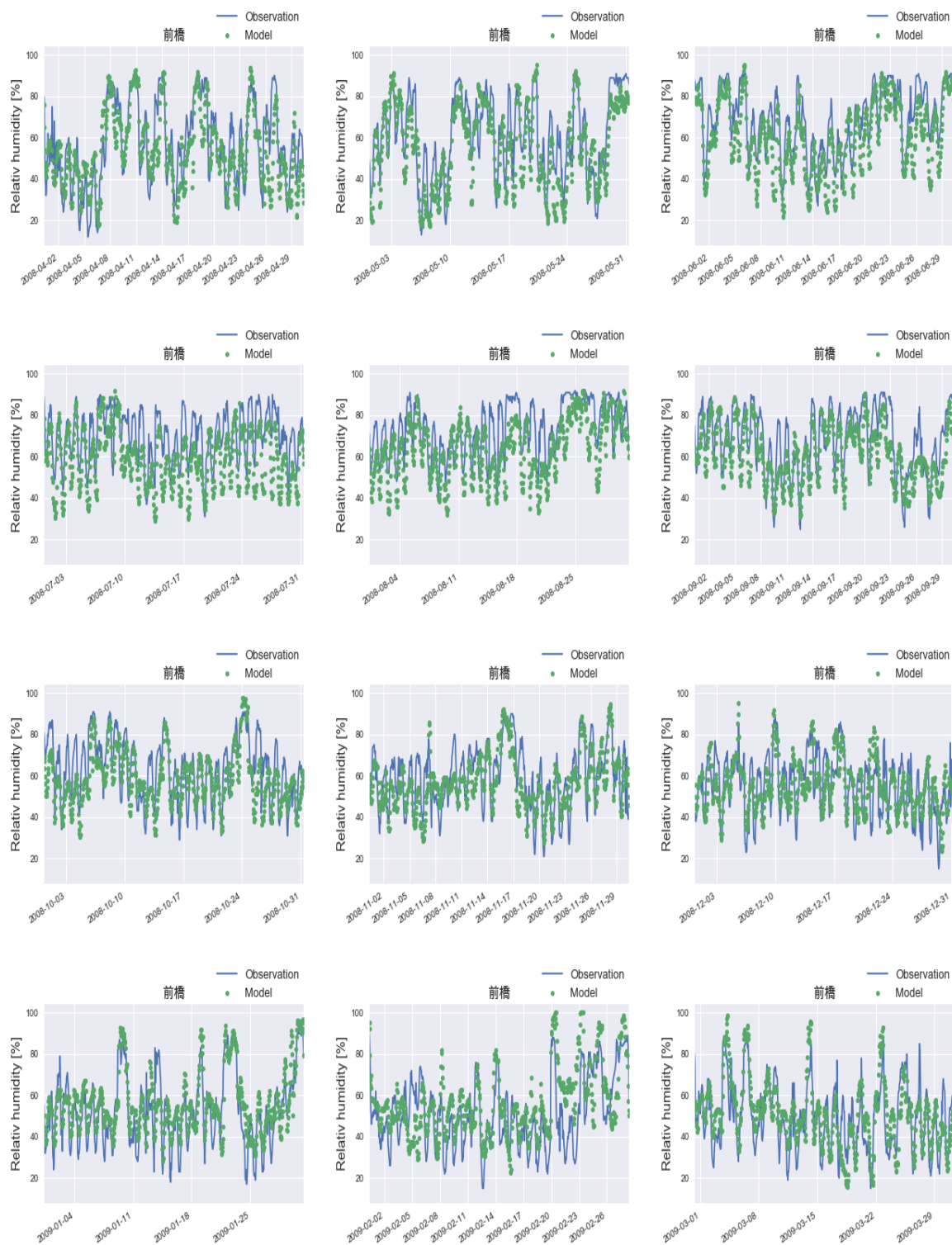


図 44 前橋での気象モデル WRF の計算値と観測データにおける相対湿度の比較
 緑点：気象モデル、青線：観測値

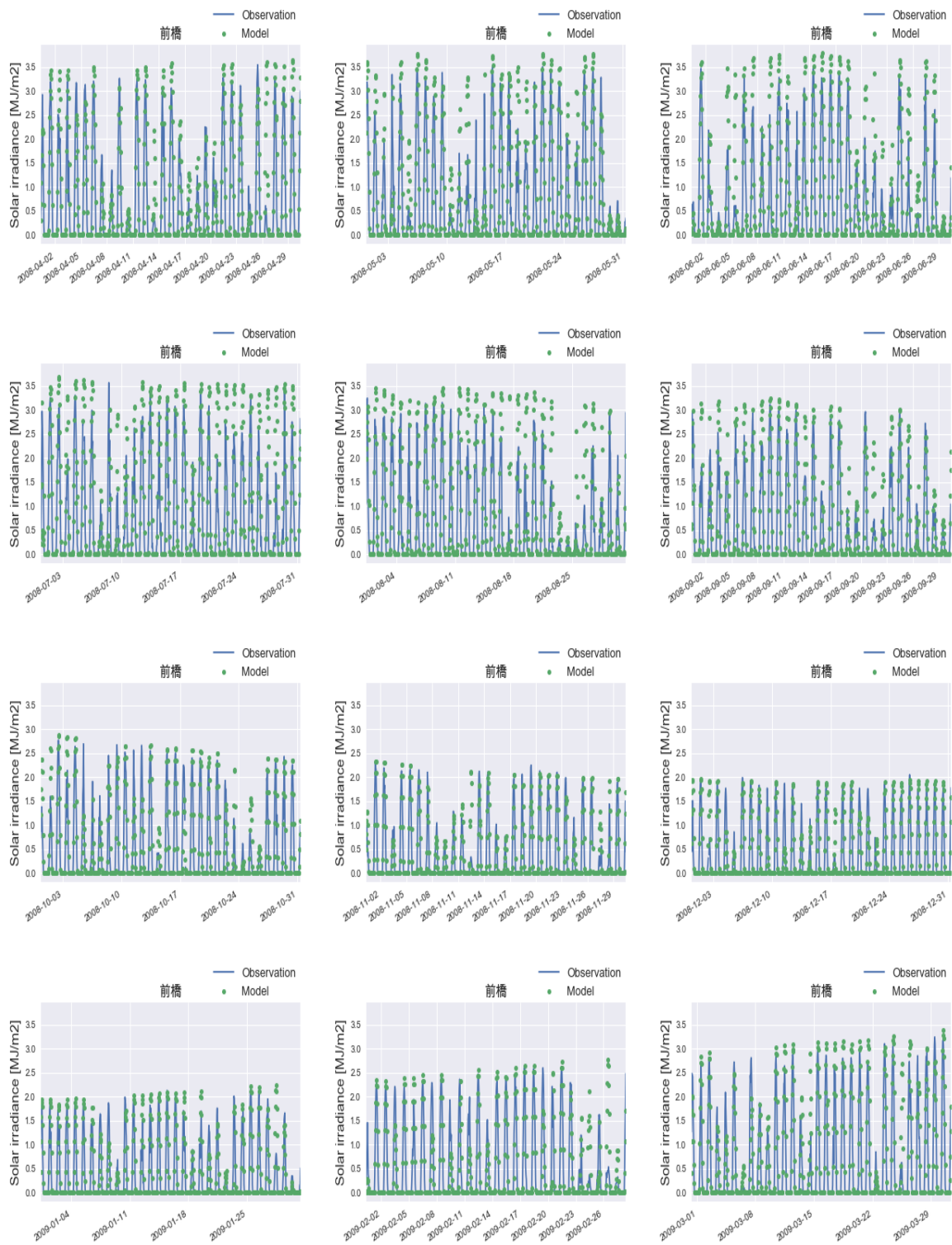


図 45 前橋での気象モデル WRF の計算値と観測データにおける日射量の比較
 緑点：気象モデル、青線：観測値

表 40 前橋における気温の統計値

YEAR	MONTH	Ave(Obs)	Ave(Model)	Ratio	NMB	NME	NRMSE	R
2008	4	13.60708	12.96446	0.95277	-0.04723	0.11959	0.11959	0.87754
2008	5	17.97043	17.78250	0.98954	-0.01046	0.08111	0.08111	0.92368
2008	6	21.11667	21.52178	1.01918	0.01918	0.06369	0.06369	0.89427
2008	7	26.29946	27.11314	1.03094	0.03101	0.06214	0.06214	0.82184
2008	8	25.80565	26.87472	1.04143	0.04143	0.06879	0.06879	0.87564
2008	9	22.92490	23.39775	1.02063	0.02064	0.06125	0.06125	0.92233
2008	10	17.62930	17.50466	0.99293	-0.00707	0.07589	0.07589	0.88924
2008	11	10.73861	10.63043	0.98993	-0.01007	0.12741	0.12741	0.89631
2008	12	6.95188	6.35557	0.91422	-0.08578	0.22706	0.22603	0.87778
2009	1	4.25578	2.98071	0.70039	-0.29961	0.38946	0.36734	0.90537
2009	2	5.49598	3.83159	0.69716	-0.30284	0.37410	0.36728	0.87472
2009	3	7.63387	6.45985	0.84621	-0.15379	0.24291	0.24291	0.89486
ALL	ALL	15.08945	14.84910	0.98407	-0.01607	0.10532	0.01349	0.97650

表 41 前橋における風向の統計値

YEAR	MONTH	0	1	2	3	4	5	6	7	8
2008	4	21.958042	29.230769	13.986014	7.692308	6.993007	5.734266	6.013986	6.013986	2.377622
2008	5	19.919246	33.378197	16.016151	6.594886	6.325707	4.576043	6.056528	4.710633	2.422611
2008	6	17.912553	29.055007	12.976023	8.885755	6.346968	7.052186	7.475317	7.757405	2.538787
2008	7	15.718157	29.674797	15.853659	7.859079	4.742547	6.233062	7.994580	8.265583	3.658537
2008	8	15.531335	20.708447	14.305177	8.583106	7.356948	7.629428	9.673025	10.899183	5.313351
2008	9	18.041958	30.209790	13.566434	5.314685	6.153846	7.412587	8.391608	7.132867	3.776224
2008	10	19.433198	28.879892	12.820513	6.342780	9.311741	7.692308	7.692308	5.263158	2.564103
2008	11	22.841226	34.261838	16.016713	5.710306	6.267409	4.038997	4.178273	4.735376	1.949861
2008	12	21.563342	31.536388	18.733154	7.142857	6.873315	4.582210	4.582210	3.504043	1.482480
2009	1	23.450135	40.970350	15.498652	6.334232	3.504043	3.638814	2.964960	2.156334	1.482480
2009	2	27.570790	32.488823	13.561848	7.004471	3.874814	4.172876	5.216095	4.619970	1.490313
2009	3	27.150538	34.946237	14.381720	4.032258	4.973118	4.435484	5.107527	3.763441	1.209677
ALL	ALL	20.890725	31.290174	14.830119	6.783747	6.072084	5.601469	6.278696	5.727732	2.525253

表 42 前橋における風速の統計値

YEAR	MONTH	Ave(Obs)	Ave(Model)	Ratio	NMB	NME	NRMSE	R
2008	4	2.822778	3.669589	1.299992	0.299992	0.592635	0.592635	0.577023
2008	5	2.684409	3.394074	1.264366	0.264366	0.524875	0.524875	0.547868
2008	6	2.088750	2.481253	1.187913	0.187913	0.634735	0.634735	0.339375
2008	7	2.251413	2.295212	1.019454	0.020314	0.515758	0.515758	0.303940
2008	8	1.970968	2.513479	1.275251	0.275251	0.644453	0.644453	0.235603
2008	9	2.230876	2.631985	1.179799	0.181091	0.518074	0.518074	0.556541
2008	10	2.360887	2.558275	1.083607	0.083607	0.533281	0.533281	0.356144
2008	11	2.714306	2.716407	1.000774	0.000774	0.464903	0.464903	0.551454
2008	12	2.985081	2.931891	0.982182	-0.017818	0.465985	0.465985	0.555229
2009	1	3.075269	2.928480	0.952268	-0.047732	0.459184	0.459184	0.529576
2009	2	3.360714	3.522075	1.048014	0.048014	0.421811	0.421811	0.710522
2009	3	3.558199	3.963032	1.113775	0.113775	0.407001	0.407001	0.719144
ALL	ALL	2.672083	2.963597	1.109096	0.109289	0.504526	0.319489	0.571312

表 43 前橋における降雨量の統計値

YEAR	MONTH	Ave(Obs)	Ave(Model)	Ratio	NMB	NME	NRMSE	R
2008	4	0.759804	0.266231	0.350394	0.110443	0.912694	0.912694	0.523917
2008	5	0.846847	0.246413	0.290977	-0.134941	0.859037	0.859037	0.515028
2008	6	1.147959	0.172428	0.150204	-0.511876	0.925769	0.925769	0.158804
2008	7	1.107843	-0.524093	-0.473075	-0.500705	1.141322	1.141322	0.158608
2008	8	1.218341	0.310247	0.254647	-0.350380	1.368487	1.368487	-0.029045
2008	9	1.017857	0.107735	0.105845	-0.650895	1.032064	1.032064	0.201226
2008	10	0.661458	0.090559	0.136908	0.004583	1.052079	1.052079	0.330937
2008	11	0.697368	0.077053	0.110491	0.034396	0.879792	0.879792	0.512192
2008	12	0.616071	0.041773	0.067805	-0.143420	0.727362	0.727362	0.667230
2009	1	0.587719	0.119836	0.203900	0.277687	0.614433	0.614433	0.851205
2009	2	0.123288	0.080975	0.656795	4.540222	5.064444	5.064444	0.394660
2009	3	0.568421	0.055286	0.097263	-0.331519	0.801593	0.801593	0.633541
ALL	ALL	0.873068	0.086332	0.098884	-0.257828	1.042950	1.097487	0.165631

表 44 前橋における相対湿度の統計値

YEAR	MONTH	Ave(Obs)	Ave(Model)	Ratio	NMB	NME	NRMSE	R
2008	4	56.698611	53.151325	0.937436	-0.062564	0.168859	0.168859	0.806414
2008	5	61.694892	56.385612	0.913943	-0.086057	0.156495	0.156495	0.850090
2008	6	68.554167	60.051868	0.875977	-0.124023	0.141612	0.141612	0.870683
2008	7	69.814266	58.488392	0.837771	-0.162429	0.175799	0.175799	0.748401
2008	8	73.521505	63.856715	0.868545	-0.131455	0.147894	0.147894	0.762899
2008	9	68.321280	61.194287	0.895684	-0.104333	0.135630	0.135630	0.819850
2008	10	63.478495	58.302318	0.918458	-0.081542	0.145773	0.145773	0.742291
2008	11	59.223611	56.872729	0.960305	-0.039695	0.146988	0.146988	0.747682
2008	12	55.467742	54.746336	0.986994	-0.013006	0.166856	0.166856	0.660817
2009	1	52.913978	56.501896	1.067807	0.067807	0.147827	0.147827	0.841979
2009	2	51.337798	56.303636	1.096729	0.096729	0.236489	0.236489	0.640280
2009	3	49.166667	50.943311	1.036135	0.036135	0.179152	0.179152	0.770906
ALL	ALL	60.899977	57.234439	0.939811	-0.060220	0.160318	0.036780	0.766509

表 45 前橋における日射量の統計値

YEAR	MONTH	Ave(Obs)	Ave(Model)	Ratio	NMB	NME	NRMSE	R
2008	4	1.118864	0.785752	0.702277	0.126146	0.335870	0.335870	0.878265
2008	5	1.026275	0.801068	0.780559	0.156845	0.382436	0.382436	0.887979
2008	6	0.910177	0.825148	0.906579	0.280076	0.490322	0.490322	0.860328
2008	7	1.088775	0.983404	0.903220	0.336191	0.486603	0.486603	0.847393
2008	8	0.921660	0.778547	0.844723	0.290250	0.501843	0.501843	0.830869
2008	9	0.918523	0.645111	0.702335	0.149276	0.396691	0.396691	0.871669
2008	10	0.902189	0.504081	0.558731	0.033282	0.370241	0.370241	0.854658
2008	11	0.717632	0.380040	0.529576	0.001412	0.363246	0.363246	0.854871
2008	12	0.779888	0.357366	0.458227	-0.048311	0.349175	0.349175	0.847272
2009	1	0.752285	0.370851	0.492966	-0.014068	0.375956	0.375956	0.835328
2009	2	0.951921	0.481521	0.505841	-0.039759	0.419927	0.419927	0.774173
2009	3	1.100346	0.695813	0.632358	0.084073	0.322164	0.322164	0.884931
ALL	ALL	0.942194	0.635039	0.674000	0.136795	0.403980	0.192948	0.854313